

CERTIFICATE OF LOCATION OF GOVERNMENT CORNER

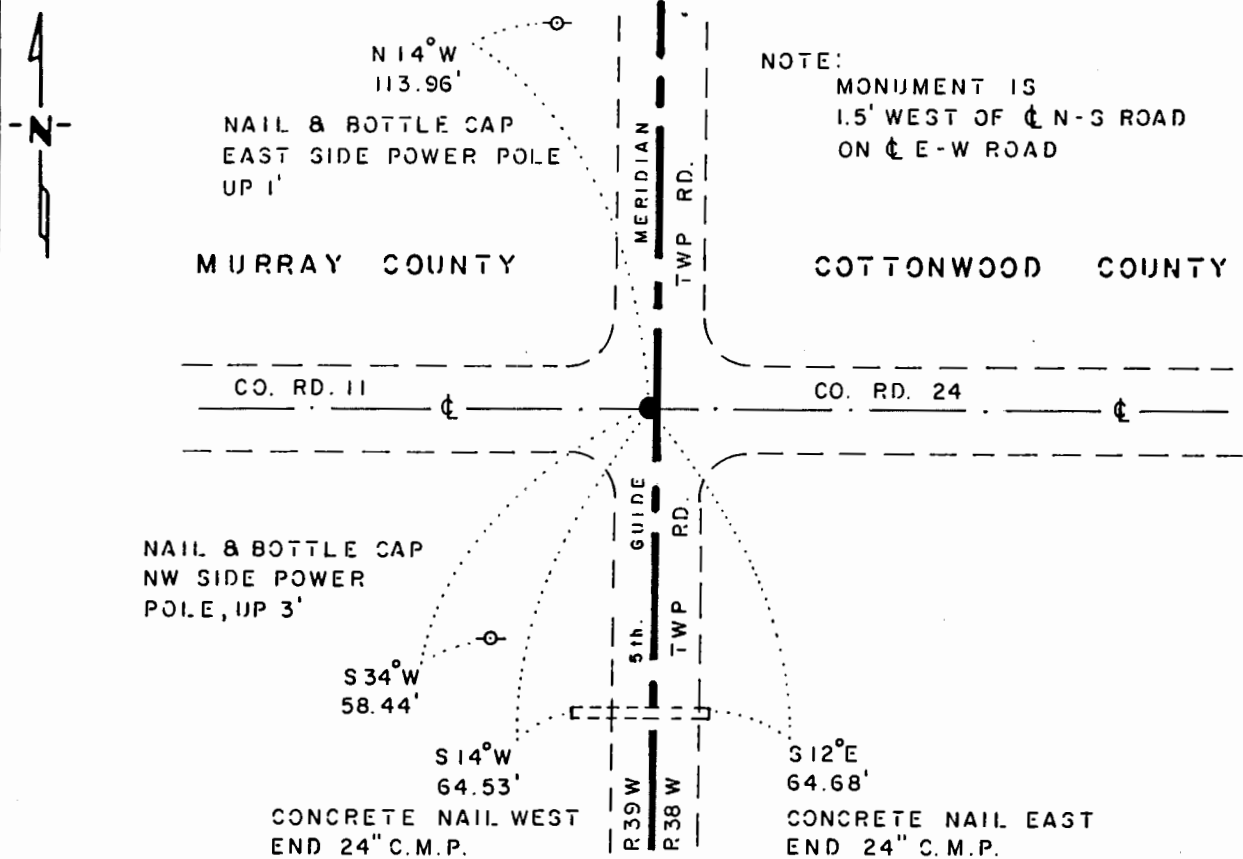
NORTHEAST Corner of Section 24, Township 107 N., Range 39 W., 5 th. P.M.

STATE OF MINNESOTA, County of MURRAY

At the corner location shown on the sketch:

- On 3-20-85 found a 3/4" INSIDE DIAMETER X 17" IRON PIPE, FLUSH,
DATE
OVER A 3/4" X 26" IRON ROD, DOWN 17"
 - left monument as found, lowered monument, removed monument (explain)
- On _____ placed a _____
DATE

SKETCH OF REFERENCE TIES



NOTE:
 MONUMENT IS
 1.5' WEST OF ϵ N-S ROAD
 ON ϵ E-W ROAD

BEARINGS OBSERVED WITH COMPASS

Statement of evidence relative to this corner location is on back of page. J. B. M. 10-28-85
G-1181

I hereby certify that this document and the data contained herein was prepared by me or under my direct supervision.

Lowell R. Pomeroy 11-7-85
SIGNATURE DATE

Registration No. 17005

Land Surveyor, Professional Engineer
 County Surveyor, County Engineer

OFFICE OF THE COUNTY RECORDER

County of _____

I hereby certify that this document was filed in the Co. Recorders office at _____ .M. on the _____ day of _____ A.D., 19 _____

County Recorder _____

By _____, Deputy

DOCUMENT NO. _____

Northeast Corner Section 24, Township 107 North, Range 39 West

This corner was originally established by the U. S. General Land Office survey in 1857. The government notes show corner marked with a wood post set in mound of earth with pits and trench dug around the mound. Also deposited charcoal and planted plum seeds northeast and southwest.

In March 1985, the DNR Bureau of Engineering contacted the following for corner information:

Murray County Offices of the Recorder and Highway Engineer
Cottonwood County Offices of the Recorder and Highway Engineer
Mn/Dot Office in St. Paul
U.S. Dept. of the Interior, Fish and Wildlife Office in Minneapolis
Land Surveying Firms:
Martin Land Surveying of Worthington
Madsen Land Surveyors of Fairmont
Sioux Engineering of Windom

The following information was obtained from Sioux Engineering:

A copy of a resurvey plat of Township 107 North, Range 38 West, obtained from Howard Boeck of Westbrook, and done by C. W. Gove, County Surveyor, in 1898, shows this corner:

2636.3 ft. from the east quarter corner Section 24
2787.2 ft. from the north quarter corner Section 19
Survey does not show what was found or set at the corner.

The following information was obtained from the Cottonwood County Recorders Office:

Surveyor's Record Book A, on pages 195 and 196, contain a survey by C. W. Gove, County Surveyor, dated June 29, 1898. Survey shows the corner to be an oak stake being:

2636.3 ft. from the east quarter corner of Section 24
2787.2 ft. from the north quarter corner of Section 19

The following information was obtained from the U.S. Dept. of Interior:

On a page of field notes, dated Sept. 12, 1970, corner is a found 1" iron bar at intersection of roads north-south and east-west. Set a 3/4" iron pipe over the iron bar and measured:

0.885 chains (58.41 ft.) N+B.C., power pole, southwest
0.686 chains (45.28 ft.) N+B.C., wood yield post, northwest
0.605 chains (39.93 ft.) iron yield post, southeast
42.234 chains (2787.44 ft.) from the north quarter corner Section 19
39.929 chains (2635.31 ft.) from the east quarter corner Section 24

The following information was obtained from Sioux Engineering:

A certificate of survey, dated Sept. 28, 1984, by C. Allen Ringquist, ELS #6700, shows corner as a 1" iron pipe in place 1" below surface, from U.S. Dept. of Interior records. A distance of 2787.48 ft. is shown from this corner to the north quarter corner of Section 19.

In March 1985, the DNR Bureau of Engineering traversed to the area of the corner and found a 3/4" by 17" iron pipe flush over a 3/4" by 26" iron rod down 17". Found no other metal attraction in area. Searched for and found record ties as shown. Measured from the found iron pipe:

2634.90 ft. from the east quarter corner Section 24
2787.31 ft. from the north quarter corner Section 19

Accept the iron pipe as the location for the corner.

Traverse information is available from the DNR Bureau of Engineering.
sln31/cors